

THIS DRAWING AND SPECIFICATIONS HEREIN ARE THE PROPERTY OF SCHNEIDER ELECTRIC AND SHALL NOT BE COPIED, REPRODUCED OR USED IN WHOLE OR IN PART, AS THE BASIS FOR THE MANUFACTURE OR SALE OF ITEMS WITHOUT WRITTEN PERMISSION FROM SCHNEIDER ELECTRIC. THIS DRAWING IS BASED UPON LATEST AVAILABLE INFORMATION AND IS SUBJECT TO CHANGE WITHOUT NOTICE.



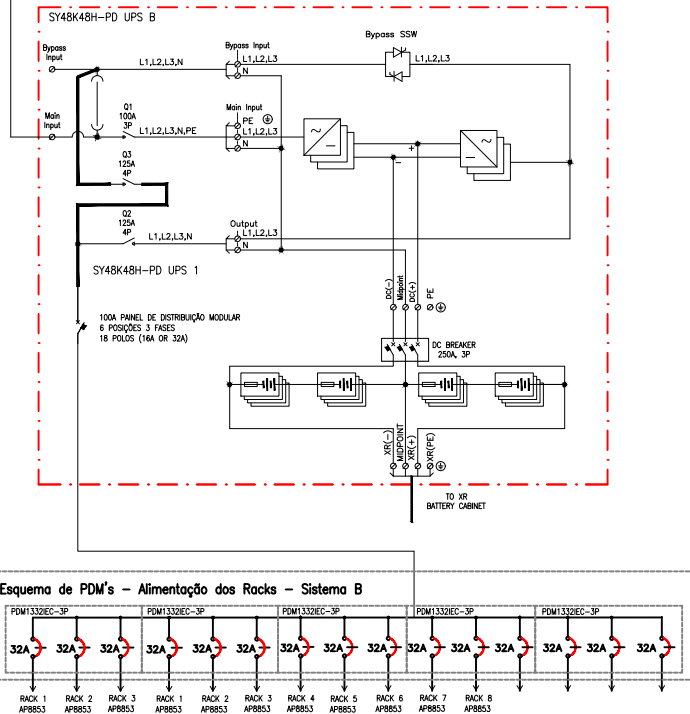
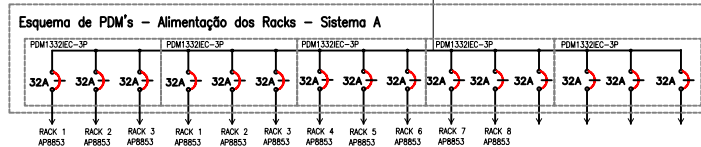
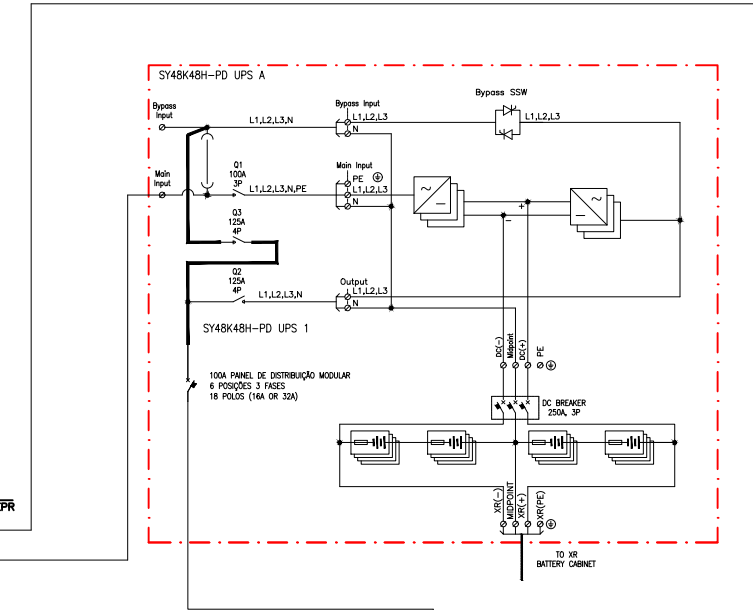
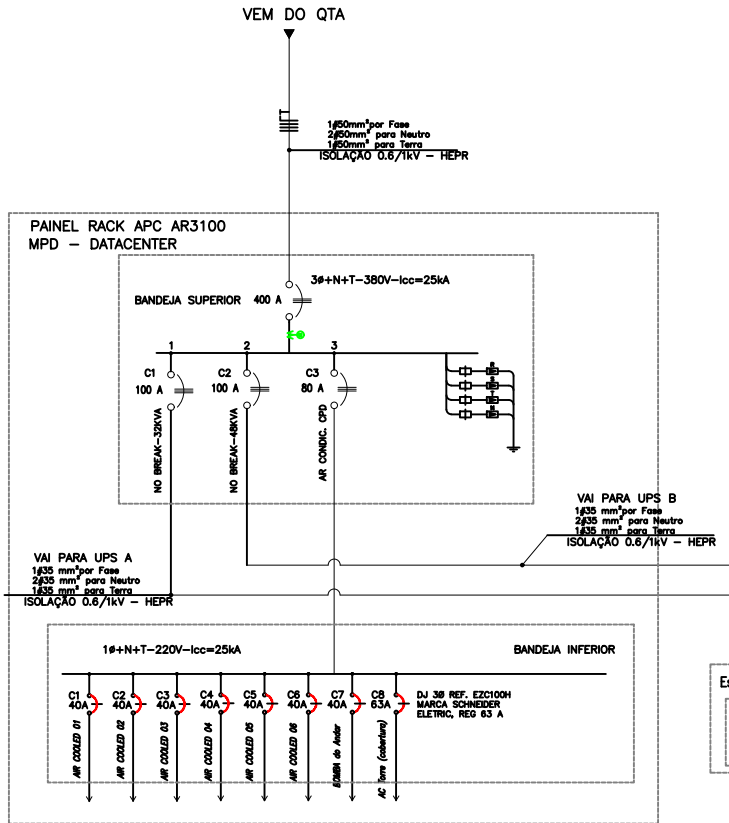
TITLE: SYMMETRA PX ALL-IN-ONE
Input: 400V AC 3PH SINGLE MAIN
Output: 400V AC, 3PH
SYSTEM ONE LINE DIAGRAM
DISTRIBUIÇÃO QTA

PROJECT: E P L **SHEET 1 OF 11**

DWG NO: OP-130103-1442257
DRAWN: A RODRIGUES
ENGINEER: F LIMA
APPROVED: R JULIANO

23-ABR-13
23-ABR-13
23-ABR-13

REV. 2
ANGLE
PROJECTION: N/A



THIS DRAWING AND SPECIFICATIONS HEREIN ARE THE PROPERTY OF SCHNEIDER ELECTRIC AND SHALL NOT BE COPIED, REPRODUCED OR USED IN WHOLE OR IN PART, AS THE BASIS FOR THE MANUFACTURE OR SALE OF ITEMS WITHOUT WRITTEN PERMISSION FROM SCHNEIDER ELECTRIC. THIS DRAWING IS BASED UPON LATEST AVAILABLE INFORMATION AND IS SUBJECT TO CHANGE WITHOUT NOTICE.



TITLE: SYMMETRA PX ALL-IN-ONE
Input: 400V AC 3PH SINGLE MAIN
Output: 400V AC, 3PH
SYSTEM ONE LINE DIAGRAM
DISTRIBUIÇÃO MPD DATACENTER

PROJECT: E P L
SHEET 2 OF 11

DWG NO: OP-130103-1442257
REV. 2

DRAWN: A RODRIGUES
ENGINEER: F LIMA

23-ABR-13
23-ABR-13
23-ABR-13

ANGLE
PROJECTION: N/A

VEM DO QTA

1/50mm² por Fase
2/50mm² para Neutro
1/50mm² para Terra
ISOLAÇÃO 0.6/1kV - HEPR

PAINEL RACK APC AR3100
MPD - EST (ESTAÇÕES DE TRABALHO 7 E 8 PAVTOS)

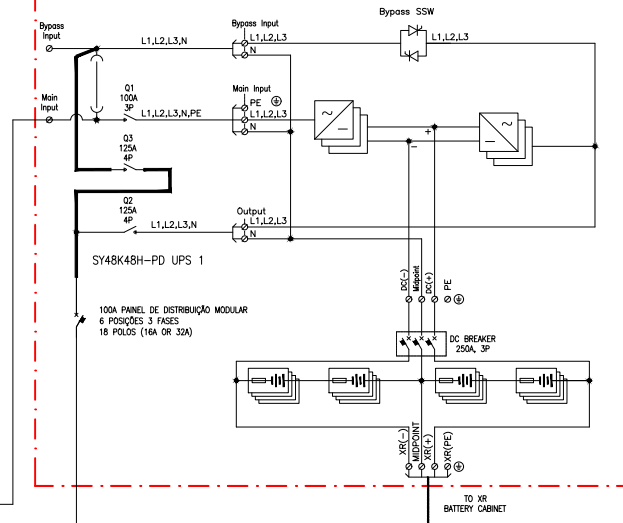
3φ+N+T-380V-icc=25kA
BANDEJA SUPERIOR 125 A

C1 100 A
C2 100 A
NO BREAK-48VIA
NO BREAK-48VIA

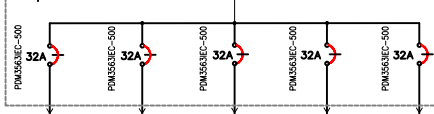
VAI PARA UPS A
1/35 mm² por Fase
2/35 mm² para Neutro
1/35 mm² para Terra
ISOLAÇÃO 0.6/1kV - HEPR

VAI PARA UPS B
1/35 mm² por Fase
2/35 mm² para Neutro
1/35 mm² para Terra
ISOLAÇÃO 0.6/1kV - HEPR

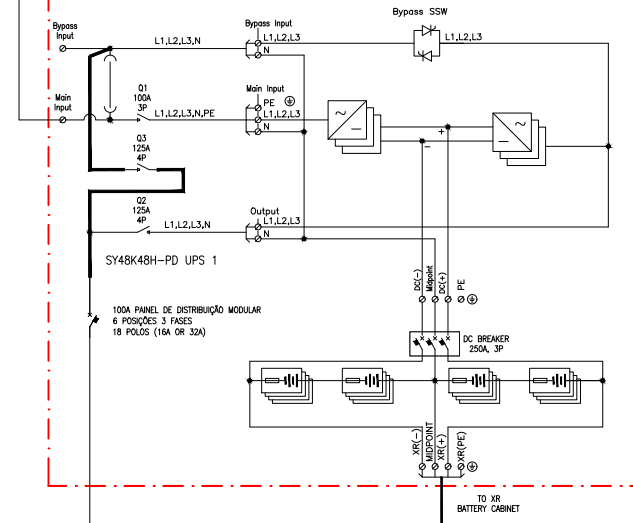
SY48K48H-PD UPS 7 PAVTO



Esquema de PDM's - 7 PAVTO



SY48K48H-PD UPS 8 PAVTO



Esquema de PDM's - 8 PAVTO



THIS DRAWING AND SPECIFICATIONS HEREIN ARE THE PROPERTY OF SCHNEIDER ELECTRIC AND SHALL NOT BE COPIED, REPRODUCED OR USED IN WHOLE OR IN PART, AS THE BASIS FOR THE MANUFACTURE OR SALE OF ITEMS WITHOUT WRITTEN PERMISSION FROM SCHNEIDER ELECTRIC. THIS DRAWING IS BASED UPON LATEST AVAILABLE INFORMATION AND IS SUBJECT TO CHANGE WITHOUT NOTICE.

Schneider
Electric

TITLE: SYMMETRA PX ALL-IN-ONE
Input: 400V AC 3PH SINGLE MAIN
Output: 400V AC, 3PH
SYSTEM ONE LINE DIAGRAM
DISTRIBUIÇÃO MPD EST

PROJECT: E P L SHEET 3 OF 11

DWG NO: OP-130103-1442257

DRAWN: A RODRIGUES 18-MAR-13

ENGINEER: F LIMA 18-MAR-13

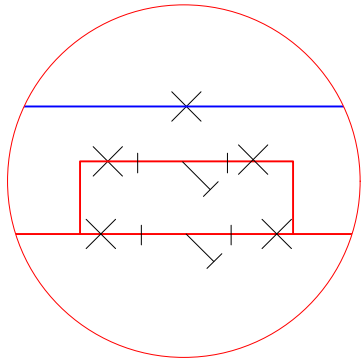
APPROVED: R JULIANO 18-MAR-13

REV. 1

ANGLE

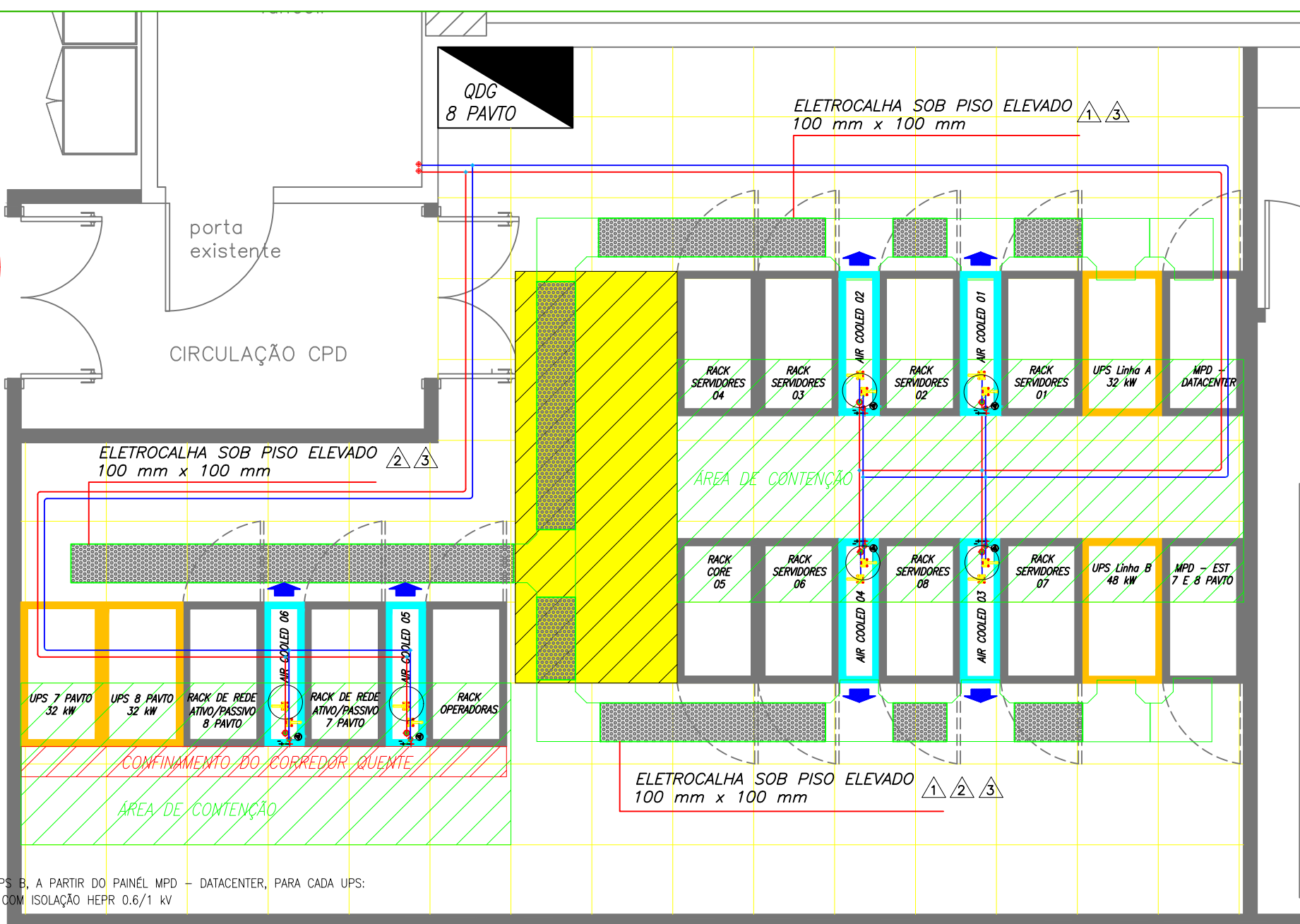
PROJECTION:

N/A



LEGENDA:

X - VÁLVULA ESFERA
Y - FILTRO Y



NOTAS:

△1. CABOS ALIMENTADORES DAS UPS A E UPS B, A PARTIR DO PAINÉL MPD - DATACENTER, PARA CADA UPS:

- 1 X 35 mm² PARA FASES (R S T), COM ISOLAÇÃO HEPR 0.6/1 kV
- 2 X 35 mm² PARA NEUTRO
- 1 X 35 mm² PARA TERRA

△2. CABOS ALIMENTADORES DAS UPS 7 PAVTO E UPS 8PAVTO, A PARTIR DO PAINÉL MPD - EST 7 E 8 PAVTO, PARA CADA UPS:

- 1 X 35 mm² PARA FASES (R S T), COM ISOLAÇÃO HEPR 0.6/1 kV
- 2 X 35 mm² PARA NEUTRO
- 1 X 35 mm² PARA TERRA

△3. CABOS ALIMENTADORES DAS EVAPORADORAS APC by SCHNEIDER ELECTRIC, A PARTIR DO PAINÉL MPD - DATACENTER PARA CADA EVAP.

- 3 X 10 mm² (F N T), EM CABO PP

4. A TUBULAÇÃO DA REDE FRIGORIGENA NUNCA DEVE CRUZAR COM AS ELETROCALHAS.

THIS DRAWING AND SPECIFICATIONS HEREIN ARE THE PROPERTY OF SCHNEIDER ELECTRIC AND SHALL NOT BE COPIED, REPRODUCED OR USED IN WHOLE OR IN PART, AS THE BASIS FOR THE MANUFACTURE OR SALE OF ITEMS WITHOUT WRITTEN PERMISSION FROM SCHNEIDER ELECTRIC. THIS DRAWING IS BASED UPON LATEST AVAILABLE INFORMATION AND IS SUBJECT TO CHANGE WITHOUT NOTICE.

Schneider
Electric

TITLE: SYMMETRA PX ALL-IN-ONE
Input: 400V AC 3PH SINGLE MAIN
Output: 400V AC, 3PH
EXECUTIVO 8" PAVTO
LAYOUT

PROJECT: EPL SHEET 4 OF 11

DWG NO: OP-130103-1442257

DRAWN: A RODRIGUES 23-ABR-13

ENGINEER: F LIMA 23-ABR-13

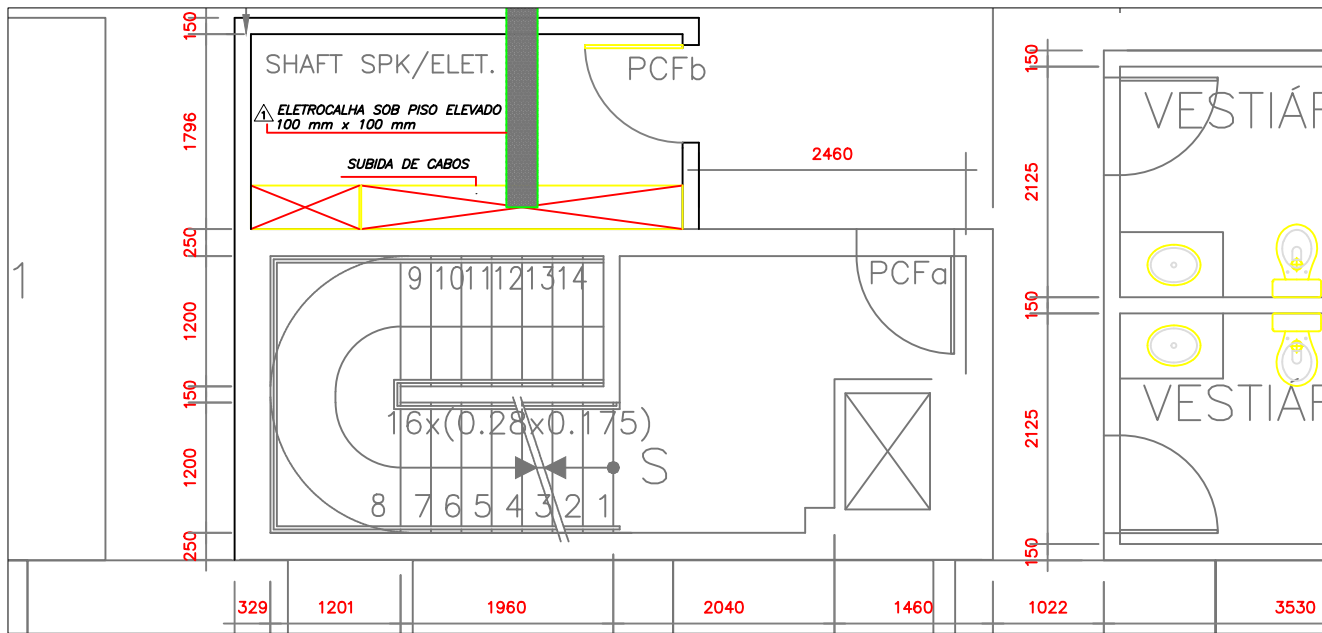
APPROVED: R JULIANO 23-ABR-13

REV. 2

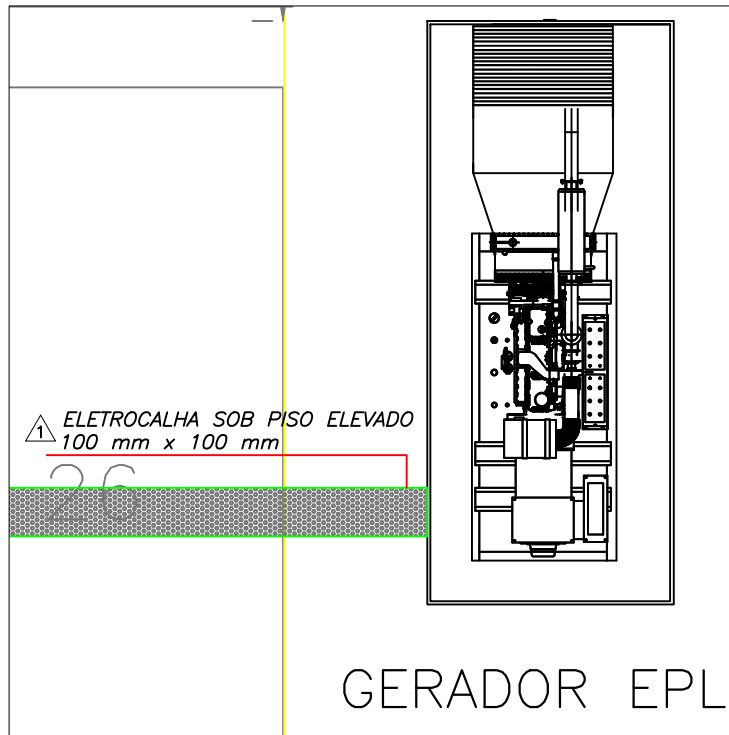
ANGLE

PROJECTION:

N/A



DETALHE DO SUBSOLO – SHAFT PARA SUBIDA DE CABOS



DETALHE DO SUBSOLO – GMD

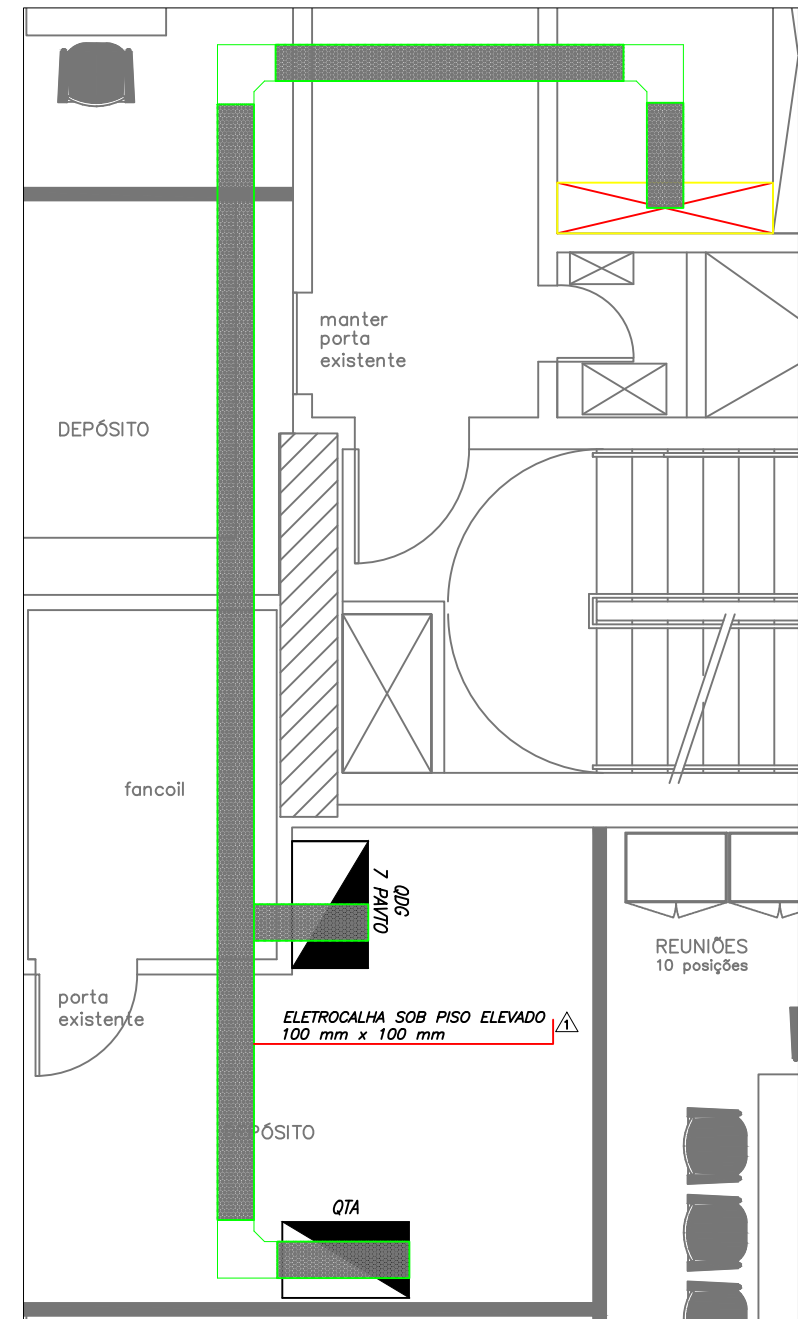
NOTAS:

△1. CABOS ALIMENTADORES DAS UPS A E UPS B, PARA CADA UPS:

- 1 X 185 mm² PARA FASES (R S T), COM ISOLAÇÃO HEPR 0.6/1 kV
- 2 X 185 mm² PARA NEUTRO
- 1 X 95 mm² PARA TERRA

△2. CARACTERÍSTICAS TÉCNICAS DO GERADOR:

TIPO DE MÁQUINA: SÍNCRONA.
 POTÊNCIA NOMINAL: 260KVA E 216KW
 FATOR DE POTÊNCIA: 0.8
 TENSÃO: 380V +−1.5%
 ESQUEMA DE LIGAÇÃO: ESTRELA-SÉRIE
 IMPEDÂNCIAS:
 SUBTRANSIENTE: 0.14 p.u.
 TRANSIENTE: 0.21 p.u.
 REGIME PERMANENTE: 2.5 p.u.
 VALOR DE BASE: 240KVA



DETALHE – 7º ANDAR

THIS DRAWING AND SPECIFICATIONS HEREIN ARE THE PROPERTY OF SCHNEIDER ELECTRIC AND SHALL NOT BE COPIED, REPRODUCED OR USED IN WHOLE OR IN PART, AS THE BASIS FOR THE MANUFACTURE OR SALE OF ITEMS WITHOUT WRITTEN PERMISSION FROM SCHNEIDER ELECTRIC. THIS DRAWING IS BASED UPON LATEST AVAILABLE INFORMATION AND IS SUBJECT TO CHANGE WITHOUT NOTICE.

Schneider Electric

TITLE: SYMMETRA PX ALL-IN-ONE
 Input: 400V AC 3PH SINGLE MAIN
 Output: 400V AC, 3PH
 ENCAMINHAMENTO ELETROCALHAS
 DETALHAMENTO

PROJECT: EPL SHEET 6 OF 11

DWG NO: OP-130103-1442257

DRAWN: A RODRIGUES 18-MAR-13

ENGINEER: F LIMA 18-MAR-13

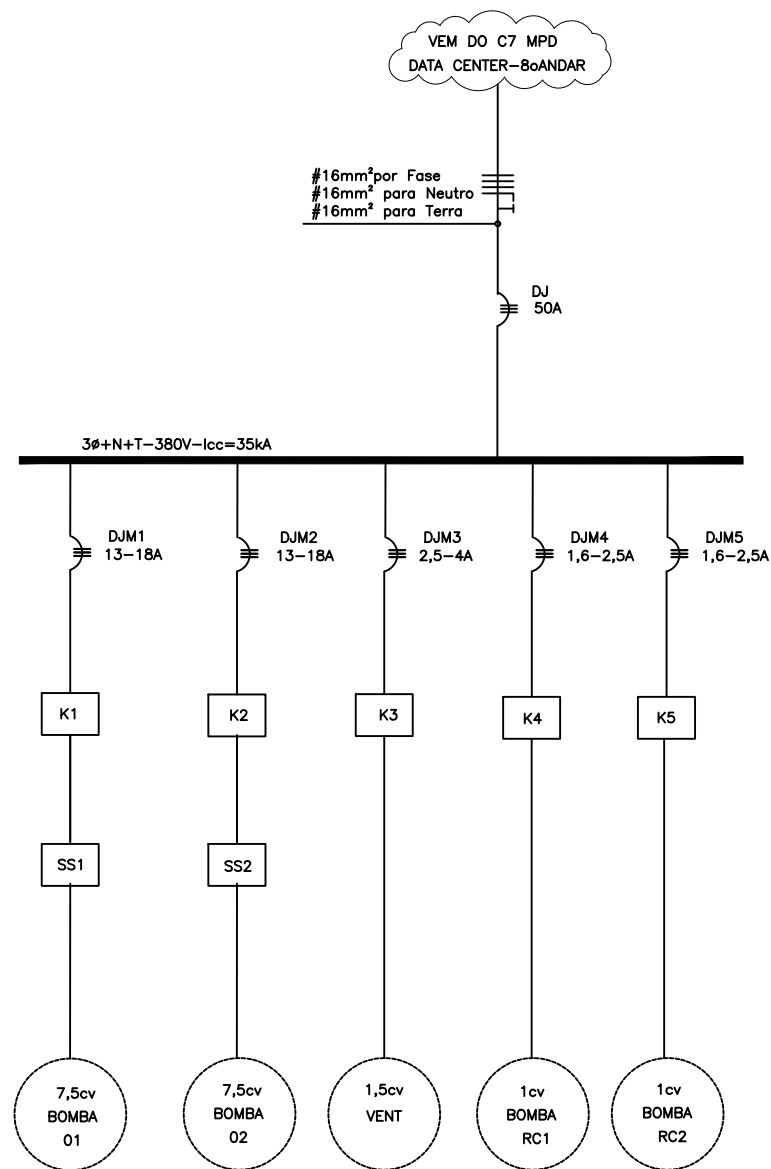
APPROVED: R JULIANO 18-MAR-13

REV. 1

ANGLE

PROJECTION:

N/A



THIS DRAWING AND SPECIFICATIONS HEREIN ARE THE PROPERTY OF SCHNEIDER ELECTRIC AND SHALL NOT BE COPIED, REPRODUCED OR USED IN WHOLE OR IN PART, AS THE BASIS FOR THE MANUFACTURE OR SALE OF ITEMS WITHOUT WRITTEN PERMISSION FROM SCHNEIDER ELECTRIC. THIS DRAWING IS BASED UPON LATEST AVAILABLE INFORMATION AND IS SUBJECT TO CHANGE WITHOUT NOTICE.

Schneider
Electric

TITLE: SYMMETRA PX ALL-IN-ONE
Input: 400V AC 3PH SINGLE MAIN
Output: 400V AC, 3PH
ENCAMINHAMENTO ELETROCALHAS
DETALHAMENTO

PROJECT: E P L SHEET 7 OF 11

DWG NO: OP-130103-1442257

DRAWN: A RODRIGUES 18-MAR-13

ENGINEER: F LIMA 18-MAR-13

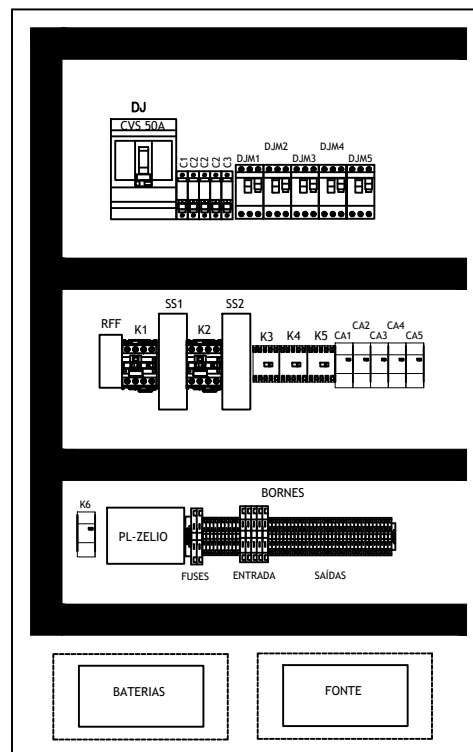
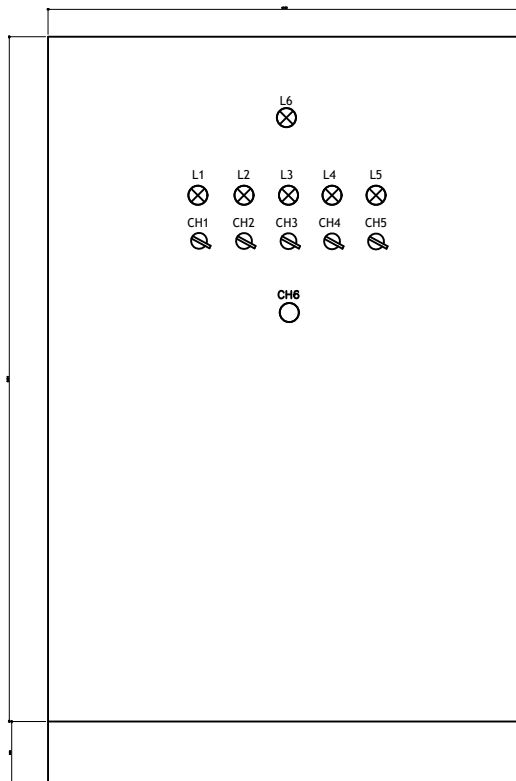
APPROVED: R JULIANO 18-MAR-13

REV. 1

ANGLE

PROJECTION:

N/A



THIS DRAWING AND SPECIFICATIONS HEREIN ARE THE PROPERTY OF SCHNEIDER ELECTRIC AND SHALL NOT BE COPIED, REPRODUCED OR USED IN WHOLE OR IN PART, AS THE BASIS FOR THE MANUFACTURE OR SALE OF ITEMS WITHOUT WRITTEN PERMISSION FROM SCHNEIDER ELECTRIC. THIS DRAWING IS BASED UPON LATEST AVAILABLE INFORMATION AND IS SUBJECT TO CHANGE WITHOUT NOTICE.



TITLE: SYMMETRA PX ALL-IN-ONE
Input: 400V AC 3PH SINGLE MAIN
Output: 400V AC, 3PH
ENCAMINHAMENTO ELETROCALHAS
DETALHAMENTO

DWG NO: OP-130103-1442257

REV. 1

DRAWN: A RODRIGUES 18-MAR-13

ANGLE

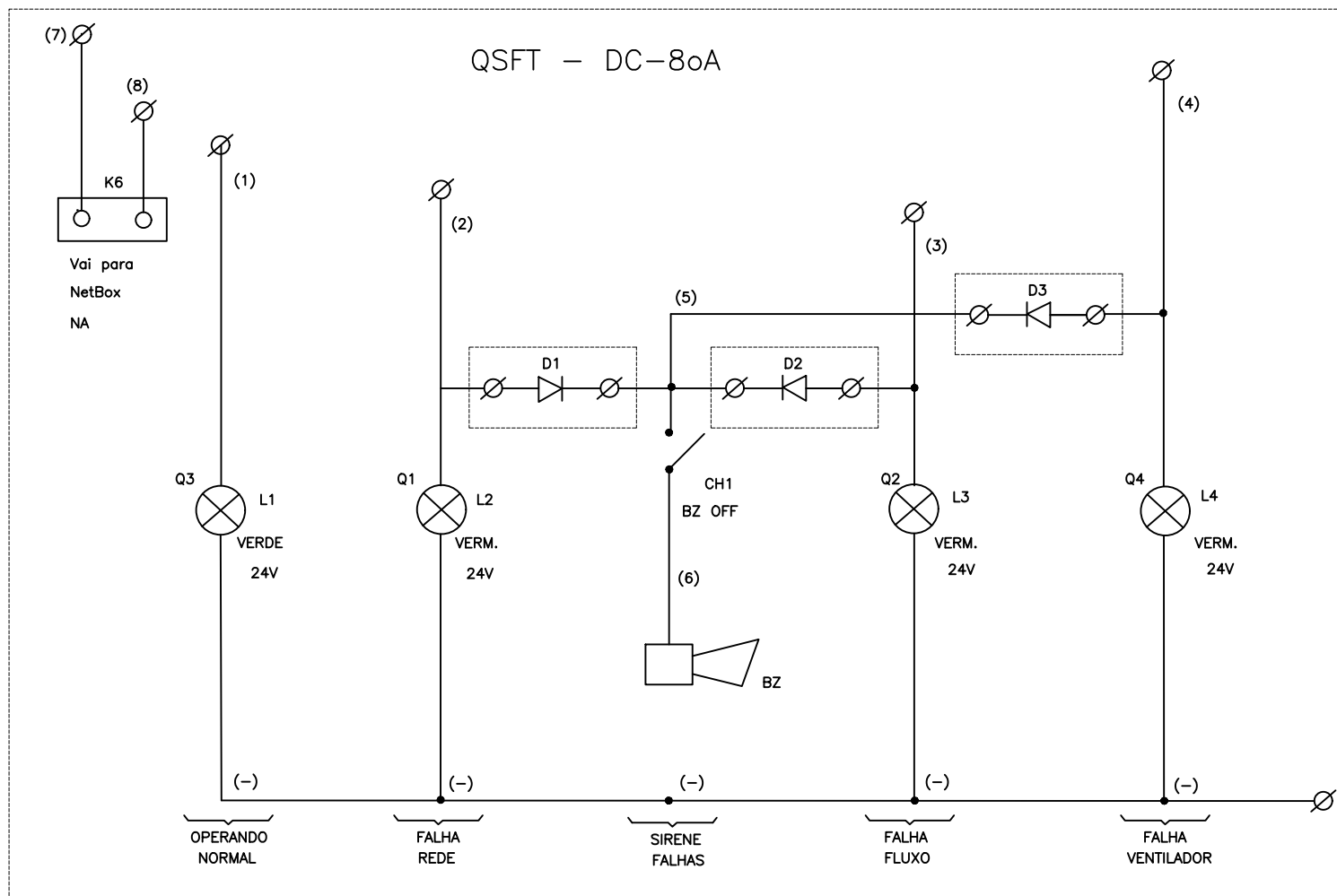
ENGINEER: F LIMA 18-MAR-13

PROJECTION:

PROJECT: E P L SHEET 9 OF 11

APPROVED: R JULIANO 18-MAR-13

N/A



THIS DRAWING AND SPECIFICATIONS HEREIN ARE THE PROPERTY OF SCHNEIDER ELECTRIC AND SHALL NOT BE COPIED, REPRODUCED OR USED IN WHOLE OR IN PART, AS THE BASIS FOR THE MANUFACTURE OR SALE OF ITEMS WITHOUT WRITTEN PERMISSION FROM SCHNEIDER ELECTRIC. THIS DRAWING IS BASED UPON LATEST AVAILABLE INFORMATION AND IS SUBJECT TO CHANGE WITHOUT NOTICE.

Schneider
Electric

TITLE: SYMMETRA PX ALL-IN-ONE
Input: 400V AC 3PH SINGLE MAIN
Output: 400V AC, 3PH
ENCAMINHAMENTO ELETROCALHAS
DETALHAMENTO

PROJECT: EPL SHEET 10 OF 11

DWG NO: OP-130103-1442257

DRAWN: A RODRIGUES 18-MAR-13

ENGINEER: F LIMA 18-MAR-13

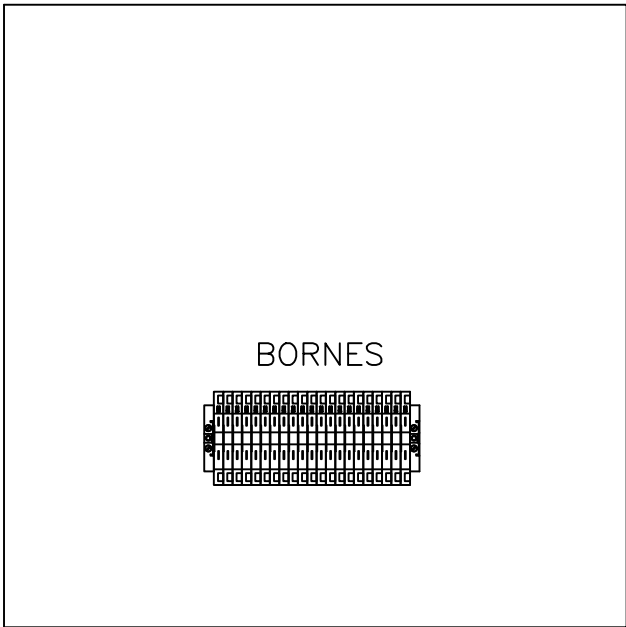
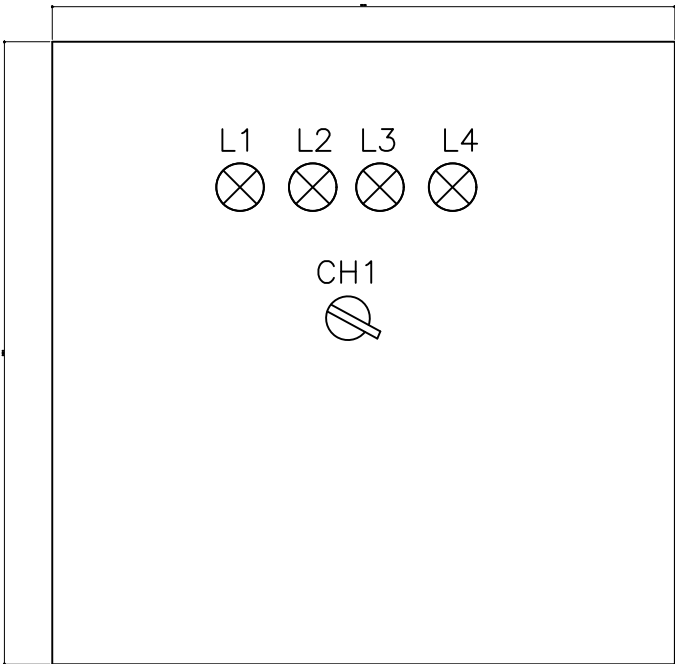
APPROVED: R JULIANO 18-MAR-13

REV. 1

ANGLE

PROJECTION:

N/A



THIS DRAWING AND SPECIFICATIONS HEREIN ARE THE PROPERTY OF SCHNEIDER ELECTRIC AND SHALL NOT BE COPIED, REPRODUCED OR USED IN WHOLE OR IN PART, AS THE BASIS FOR THE MANUFACTURE OR SALE OF ITEMS WITHOUT WRITTEN PERMISSION FROM SCHNEIDER ELECTRIC. THIS DRAWING IS BASED UPON LATEST AVAILABLE INFORMATION AND IS SUBJECT TO CHANGE WITHOUT NOTICE.



TITLE: SYMMETRA PX ALL-IN-ONE
Input: 400V AC 3PH SINGLE MAIN
Output: 400V AC, 3PH
ENCAMINHAMENTO ELETROCALHAS
DETALHAMENTO

DWG NO: OP-130103-1442257

REV. 1

DRAWN: A RODRIGUES 18-MAR-13

ANGLE

ENGINEER: F LIMA 18-MAR-13

PROJECTION:

PROJECT: E P L SHEET 11 OF 11

APPROVED: R JULIANO 18-MAR-13

N/A

SHT	DRAWING NUMBER	REVISION									REVISION DESCRIPTION	REVISION INITIATED BY (ECO/ENGR)	REVISION APPROVED BY
		1	2	3	4	5	6	7	8	9			
1	OP-130103-1442257		X								Alteração de disjuntor principal do QTA e adição de mais dois disjuntores no QTA e um no MPD.	A RODRIGUES	R JULIANO
2	OP-130103-1442257		X								Adição de um disjuntor para a torre de condesação no MPD>	A RODRIGUES	R JULIANO
3	OP-130103-1442257	X									Creation of design.	A RODRIGUES	R JULIANO
4	OP-130103-1442257		X								Alteração no encaminhamento da rede frigorígena.	A RODRIGUES	R JULIANO
5	OP-130103-1442257	X									Creation of design.	A RODRIGUES	R JULIANO
6	OP-130103-1442257	X									Creation of design.	A RODRIGUES	R JULIANO

NOTE:
△FOR PREVIOUS REVISIONS, CONTACT CAD TEAM.

FILE: OP-130103-1442257 - Projeto.EPL.rev2	INITIALLY DRAWN BY: A RODRIGUES	FILE REV: 2
INITIAL RELEASE: 23-ABR-2013	INITIALLY APPROVED BY: R JULIANO	DATE: 18-MAR-13

